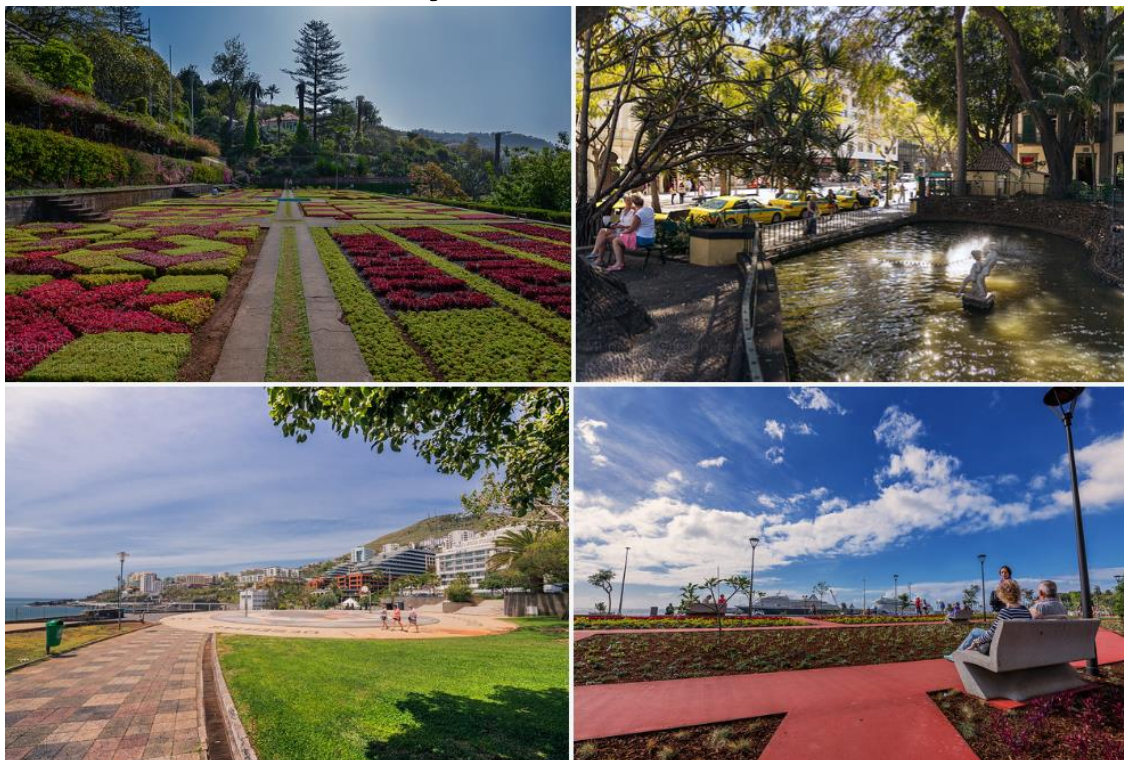


MADEIRA - by EXOTIK JOURNEYS 2022



SUMMARY PAGES

ABOUT MADEIRA.....	2
MADEIRA SELF DRIVE.....	4
LONG STAY IN FUNCHAL – LIDO AREA.....	8
FUNCHAL – SHORT BREAK MADEIRA ISLAND	15
MADEIRA.....	19
REGULAR WALKS (LEVADAS) - MADEIRA ISLAND.....	26
TAKE ADVANTAGE OF THE NEW PORTUGAL INSURANCE AND TRAVEL SAFE	29

Right in the middle of the Atlantic, the islands of Madeira and Porto Santo are a haven of natural beauty. The exotic colours of the flowers stand out from among the blue sea and the emerald, green vegetation. This is an archipelago where two thirds are a protected area and where the largest Laurisilva forest in the world is located.

Discover 
madeira

ABOUT MADEIRA



Right in the middle of the Atlantic, the islands of Madeira and Porto Santo are a haven of natural beauty. The exotic colours of the flowers stand out from among the blue sea and the emerald, green vegetation; this is an archipelago where two thirds are a protected area and where the largest Laurisilva forest in the world is located.

The springtime temperature, felt all year round, cries out for open air activities. You can go for a walk along the network of levadas (irrigation channels), visit the city of Funchal and discover the heritage associated with the discoveries or roam freely around the island. Boat rides are an excellent way of admiring the coastline from a different perspective.

In such a naturally welcoming environment, balance and well-being are taken for granted. Madeira offers various tourist complexes and accesses to the sea with prime conditions for leisure boating and scuba diving. The island of Porto Santo, in particular, is the ideal place to escape from stress and undertake a thalassotherapy programme, or a beach holiday combined with a spot of golf.

Popular feasts, which take place all year round, are opportunities to appreciate traditional gastronomic flavours and see Madeira partying, especially during the Carnival parades, the Flower Festival, the Atlantic Festival and, above all, the end-of-year fireworks display.

Play the Video – [click here](#)



[click here to](#)

Discover 
madeira



At whatever time of year, its mild climate makes Funchal the ideal destination for a short break. There are many places to visit in this 500-yearold city, several of which are unmissable...

The best way to visit Funchal's historic city centre is to do it by foot. The tour begins at the Gothic Cathedral, built in the 16th century. Upon entering, look up to admire the precious alfarge ceiling (an Iberian decorative multiform style) in cedar wood carved in the Mudejar style. Visit also the Collegiate Church, whose sober facade hides an interior rich in 17th century gilt woodwork, altar pieces and tile panels.

On the opposite side of the Largo do Município, in the former Bishop's Palace, is the Museum of Sacred Art, the core of whose collection is Flemish art of the 15th and 16th centuries, evidence of the trade contacts with Flanders, to which sugar cane grown on the island was sold. Tasting this and other local flavours at the Farmers' Market provides plenty to occupy the senses: from exotic fruits to traditional delights such as bolo de mel (honey cake), you mustn't forget also the craft shops, the flower sellers wearing traditional costumes and the lively fishmongers' stalls.

Go on to the old town, to the São Tiago Fort, which houses the Museum of Contemporary Art. Find out the most appreciated products in the region in the Embroidery and Wine Museums. Here you can learn all about the beautiful pieces of delicate lace, and the fortified wine that gained fame in the 17th and 18th centuries, when it was highly appreciated in the European courts.

To finish this tour, we suggest a visit to the village of Camacha, just nine kilometres from Funchal, well known for its wicker crafts and folklore. A highlight is the traditional dance of the region - the animated "Bailinho da Madeira", whose rhythm is marked by the "brinquinho", a curious piece of handicrafts made of castanets, ribbons and wooden figures. You can see a live performance while you have dinner in a typical restaurant, savouring gastronomic specialties like kebabs on bay sticks with fried maize. Delicious!

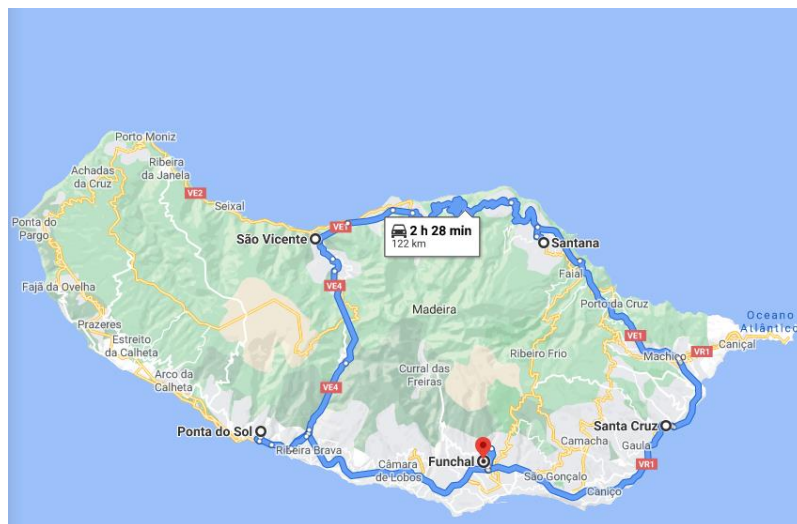
Click on the video about Madeira [here](#)

MADEIRA SELF DRIVE 8 DAYS / 7 NIGHTS



Accommodation, daily breakfast and a car to discover the island of Madeira at your own pace.

ITINERARY



DAY 1 FUNCHAL

Welcome to Funchal. Upon arrival, go to the car-rental desk to pick up your vehicle and drive to your first hotel in Funchal.

Accommodation: Hotel Pestana Village 4* or similar for 2 nights

DAY 2 FUNCHAL

Today we suggest exploring the city. Enjoy a large choice of museums and churches, the local market “Mercado dos Lavradores”, gardens and a character old town.

You should not lose the chance to take the cable car up to the beautiful little village of Monte from where you can toboggan (in a wicker basket!) most of the way back down to Funchal.

During your stay, we recommend a visit the Nun’s valley village surrounded by extinct volcanoes and high mountains. Back in the 16th century nuns fled their convent in Funchal when it came under attack from pirates. The village is very isolated, and the fertile soil allowed locals mainly live of what they grow. The local chestnuts are delicious and are used in everyday cooking. (B)

DAYS 3 - 4 FUNCHAL - PONTA DO SOL (24KM)

Drive along the west coast to Ponta do Sol, the main centre for banana production on the island.

Our suggestions of activities would be:

- Câmara de Lobos, an attractive fishing village whose most famous visitor was Winston Churchill. He liked to go there and do some painting.
- Cabo Girão, the second highest sea cliff in the world which offers fantastic views along the south coast and to the sea a dizzying 580m below you.
- Ribeira Brava (‘Wild River’), a pleasant place to spend some time. You may wish to visit one of Madeira’s finest museums, the Ethnographic Museum.
- Calheta, the former sugar cane cultivation centre. Also, there is a small artificial and protected sandy beach (sand imported from the Canaries). (B)

Accommodation: Hotel 1905 Zino’s Palace or similar for 2 nights

DAY 5 PONTA DO SOL - SÃO VICENTE (21KM)

Leave from Ponta do Sol direction to São Vicente, São Vicente’s old town is worth seeing and stay, with its cobbled streets and beautiful church it is another of Madeira’s prettiest villages.

On your way, we suggest following attractive sites on the west side of the Island:

- Village Jardim do Mar (can only be visited on foot). Take a stroll around the village and down to the promenade (sea defences). It is a charming place.
- You might like to visit a mini zoo and herb garden in the village of Prazeres which has a well-maintained mini zoo with llamas, Vietnamese pigs and more. Here you will also find flowers, fruits, and an herb garden and tea house.
- Ponta do Pargo - if you go down to the lighthouse (Farol) you will be at the westernmost point of the island.
- Then continue to Porto Moniz, well known for its natural sea pools formed in volcanic rock. You could perhaps take a swim here!

While staying in São Vicente you should visit nearby the Lava Caves. These caves were formed some 400,000 years ago thanks to a volcanic eruption, but they were only discovered in 1855 and opened in 1997. After your visit to the caves, you can enjoy a wonderful 3D film on the volcanic eruption which formed Madeira. This is included in the entrance fee to the caves (entrance fee not included).

Driving south you will find Encumeada (1007 meters high) from where you may see both the north and the south coast. (B)

Accommodation: Hotel Estalagem do Vale 4* or similar for 1 night

DAYS 6 - 7 SAO VICENTE- SANTA CRUZ (53KM)

Continue to explore the northeast coast via São Jorge (recommend a visit to the church) and Santana considered one of the most attractive villages on Madeira, due to its stunning location, you must also view the unusual houses, peculiar to this area. These are known in Portuguese “As Palheiros” (‘haylofts’) and are tiny, thatched houses shaped like the letter ‘A’.

From Santana to Santa Cruz take the road to Ribeiro Frio (‘cold river’), to Poiso, this means ‘resting place’ and was a traditional stop for travellers, where they can appreciate the fantastic view across to both coastlines.

For stunning views ascend above the clouds to Pico do Arieiro (with 1810m high), the second highest peak on the island.

Overnight for 2 nights in Hotel Vila Galé Santa Cruz and discover the East Coast of Madeira Island:

- Camacha, the wicker-work village. One of the most popular tourist sights here is the modern style church ‘O Relógio’. Next to this church, is the Clock Café with its fantastic exhibition of wicker-work articles ranging from small baskets up to complete furniture. This is the only place you can see wicker-work production on the island as it is a cottage industry.

From here drive to the pretty fishing village of Caniçal, once the most famous whaling village on the island. This practice was outlawed in 1981 - nowadays the only reminders lie in the Museum of Whaling (Museu da Baleia). You will find some excellent fish restaurants.

On the way back to your hotel we suggest that you explore the first capital of Madeira, Machico, the second biggest city in Madeira and one of the centres for boat building on the island. (B)

Accommodation: Hotel Vila Gale Santa Cruz 4* or similar for 2 nights

DAY 8 FUNCHAL

Return the car rental to Funchal today. End of services. (B)



INCLUSIONS

- Daily breakfast
- 2 nights at Hotel Pestana Village 4* | Funchal www.pestana.com
- 2 nights at 1905 Zino's Palace | Ponta do Sol <https://www.1905zinospalace.com/en/>
- 1 night at Hotel Estalagem do Vale 4* | São Vicente www.estalagemdovale.com
- 2 night at Vila Galé Santa Cruz 4* | Santa Cruz <https://www.vilagale.com/en/hotels/madeira/vila-gale-santa-cruz>
- Car-hire Grp EDMR (Seat Ibiza A/C or similar) with Europcar - 1 week P/U + D/O from Funchal Airport.
- Included unlimited mileage, LDW (CDW+THW), ASC (Airport service charge).

Not included: flights, lunches, dinners, beverages, visit, entrances to sites, travel insurance and all item not mentioned under inclusions.

RATES PER PERSON IN \$ CAD – 2022 8 DAYS / 7 NIGHTS

Price per person in \$CAD	01 Jan – 31 Mar**	01 Apr – 30 Apr	01 May – 30 Jun** 16 Sept – 31 Oct	01 Jul – 31 Aug	01 Sept – 15 Sept
In Double Occ.	\$790	\$910	\$965	\$1,220	\$982
In Single Occ. (Car single use)	\$1,495	\$1,715	\$1,829	\$2,339	\$1,860
Upgrade for a larger car/supplement per 7 days car rental / per car (not per person):					
Group CDMR (Renault Megane A/C or similar)	\$125	\$160	\$160	\$269	\$165
Group CWMR (Renault Megane Station Wagon A/C or similar)	\$185	\$239	\$239	\$365	\$239
Group CCAR (Renault Megane Automatic A/C or similar)	\$515	\$440	\$440	\$705	\$440

**Prices advertised on our site are valid if you purchase services in one single session. If you disconnect from our site, prices could be different in your next session. The prices indicated exclude the contribution to the Customer Compensation Fund of \$3.50 per \$1,000 of tourism product or service purchased from a travel agent in Quebec.*

NOTE: Supplements applicable during New Year's (28 Dec 2021 – 02 Jan 2022), Easter (13 Apr – 17 Apr 2022), and Flower Festival (05 May – 11 May 2022)

LONG STAY IN FUNCHAL – LIDO AREA

Four Views Monumental 4* complex



ITINERARY

DAY 1	Arrival in Funchal, transfer to Four Views Monumental 4* hotel
DAYS 2 to 13	14 nights in a studio, studio partial sea view (\$) or a one-bedroom apartment partial sea view (\$) + 2 excursions (details in next pages)
DAY 14	Transfer to Funchal airport for your flight back to Canada

INCLUSIONS

- Return transfers from Funchal airport to hotel
- 14 nights in a studio with kitchenette in Lido area Funchal
(Possibility to upgrade to a one-bedroom apartment with supplement \$)
- 2 excursions: Full day west Island tour and Full day East Island tour

PRICES PER PERSON IN \$ CAD - VALID FOR MINIMUM 14 NIGHTS - 2022

For arrivals between Jan 3 rd and Feb 2 nd , accommodation Studio Mountain view	\$970
Supplement for arrivals between Feb 3 rd and Feb 14 th	\$70
Supplement for arrivals between Feb 15 th and March 1 st	\$100
Supplement for arrivals between March 2 nd and March 15 th	\$200
Supplement for arrivals between March 16 th and April 10 th	\$250
Supplement for Studio Partial Sea view	\$290
Supplement for a one-bedroom apartment partial sea view	from \$400 to \$560
Optional daily breakfast	\$220
Single supplement	Price on request
Add the flights from Portugal or from Canada: available on request – contact your agent.	

**Prices advertised on our site are valid if you purchase services in one single session. If you disconnect from our site, prices could be different in your next session. The prices indicated exclude the contribution to the Customer Compensation Fund of \$3.50 per \$1,000 of tourism product or service purchased from a travel agent in Quebec.*

About the hotel

Situated in the heart of the Lido district, the most important tourist area in Funchal, the Four Views Monumental Hotel 4* is a fine choice for an invigorating holiday in Madeira, full of pleasure and fun.

With a smart interior decoration, privileging an elegant architecture and strong colours, the hotel has 11 floors and offers 168 double rooms, 32 apartments and 62 studios, all featuring a balcony, sea and/or mountain view.

All the hotel's rooms are nicely decorated in a functional style and the apartments and studios are equipped with a kitchenette



Key Features

Located in the main tourist area in Funchal (Lido Area)
Bar with a variety of evening entertainment (daily)
(Bars and Restaurant)
Sea and bathing areas nearby
Sea and Mountain views
Near the Passeio Marítimo (Promenade- boardwalk)
2 kms from the centre of Funchal, the most dynamic city in Madeira Island
Near the Fórum Madeira (Shopping Centre)
ISO 14001 Certification (view GreenViews)

[Video click here](#)



[Video click here](#)



Studios

Ideally suited for families with children, the Studios at the Four Views Monumental Hotel are generous in size, simple and functional, and are equipped with a kitchenette. Furnished in modern style and decorated in warm colours with Mountain view or with partial sea view with supplement (\$).



- Twin beds
- Sofas and a table
- Writing desk with a mirror and a chair
- LCD cable TV
- Kitchenette equipped with:
 - Fridge
 - Two-ring electrical hob
 - Microwave oven grill
 - Toaster
 - Crockery and cutlery
 - Glasses
 - Kitchen appliances
- Bathroom with shower and Bathtub
- Magnifying mirror
- Hairdryer
- Balcony with a table and chairs

Services and amenities

- Internet Wi-Fi
- Video On Demand
- Air-conditioning (cold/hot)
- Safe (Paid service)
- Coffee/Tea making facilities
- Room Service (partial)
- Bathroom equipped with bath amenities

Supplement for Partial Sea view (\$)

APARTMENTS – one-bedroom apartments also called Junior Suites

More generous in size, the Junior Suites at the Four Views Monumental Hotel are ideally suited for families, accommodating up to 4 persons. The suites have a kitchenette where you can test your cooking skills. Our Junior Suites also offer you a partial view over the Atlantic Ocean.

In our rooms (Apartment (Junior Suites)) you will find:

Twin beds

Sofa bed

Writing desk with a mirror and a chair

LCD cable TV

Dining table and chairs

Separate living area next to the bedroom; separated by a sliding door

Kitchenette equipped with:

Fridge

Two-ring electrical hob

Oven

Microwave

Toaster

Crockery and cutlery

Glasses

Kitchen appliances

Bathroom with shower

Magnifying mirror

Hairdryer

Balcony with a table and chairs

Services and amenities

Internet Wi-Fi

Video On Demand

Air-conditioning (cold/hot)

Safe (Paid service)

Coffee/Tea making facilities

Room Service (partial)

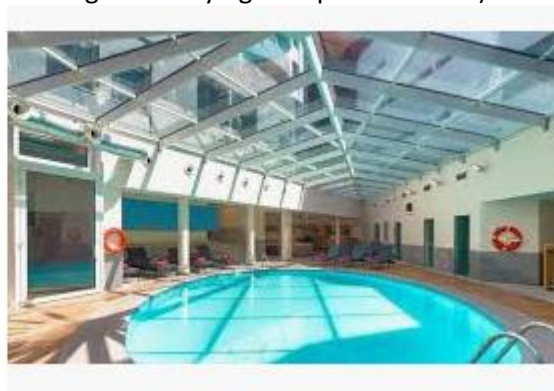
Bathroom equipped with bath amenities





Hotel facilities

- 1 Restaurant and 2 Bars (view Bars & Restaurants)
- Outdoor freshwater swimming pool (view Pools)
- Children's freshwater swimming pool (view Pools)
- Indoor heated freshwater swimming pool (view Four Senses SPA)
- SPA (view Four Senses SPA)
- Beauty Centre and Massages* (view Four Senses SPA)
- Gymnasium (view Four Senses SPA)
- Wi-Fi
- Games Room (Billiards, Table-tennis and Darts)
- TV Room
- Reading Room, with Internet-connected computer
- Meeting and Conference Rooms (view Events and Meetings)
- Mini Bar (on request)
- Room Service (partial)
- Non-smokers rooms
- Babysitting (extra)
- Private Parking
- Laundry*
- Organic Garden
- 24-hour front desk
- *Paid services (except for repeat guests or guests staying in Superior Rooms)



INCLUDED EXCURSIONS

FULL DAY EAST ISLAND TOUR

Departure: Sunday + Tuesday + Friday

Departure to the village of Camacha for a visit to the wickerwork factory. Next, ascent to Poiso on the way to Pico do Arieiro (1818 m). Descent to Ribeiro Frio where you may visit a trout farm as well as admire an important part of the Laurissilva forest of Madeira, which was recently awarded World Heritage status. We continue our trip to Santana, known for its thatched roof houses. Stop for lunch (not included). Next, we go on to Ponta de São Lourenço. Return to Funchal with a last stop at town of Machico, the original capital of the island, hidden in the bay and stretching out over the hillsides, before your return to Funchal.



FULL DAY WEST ISLAND TOUR

Departure: Monday + Wednesday + Saturday

Departure to Câmara de Lobos, the fishing village where the famous "espada" or black scabbard is fished. Next, we pass by Cabo Girão (Europe's highest sea cliff, at 580m) and continue our trip along the coast to Ribeira Brava. From Ponta de Sol we begin our ascent to the plateau of Paúl da Serra (at 1400m). Descent to Porto Moniz, where you may admire the natural pools. Stop for lunch (not included). Return trip along the northern coast, passing by Seixal and São Vicente. Climb to Encumeada (1700m) where you have a view of the sea on both coasts. Return to Funchal.



FUNCHAL – SHORT BREAK MADEIRA ISLAND 6 DAYS / 5 NIGHTS

Perfect package for a short break in Madeira!
5-night accommodation in a boutique Hotel, daily breakfasts, the choice of 3 excursions and the transfers to airport.



INCLUSIONS

- 5 nights at the 4* Sé Boutique Hotel : <http://www.seboutiquehotel.com/en/>
- 5 buffet breakfasts
- 3 excursions of your choice (see next pages) – excursions are not private. Bilingual including English
- Return transfers to FNC airport.

Not included: Flights, lunch, dinners, beverages, travel insurance and all item not mentioned under inclusions.

*Prices in this document are for information only; they were issued at press time for the current year. Please note that due to exchange rates and temporary promotions, they can increase or decrease anytime. Contact your travel agent for the price and promotion of the moment.



PRICE PER PERSON IN \$ CAD, IN DOUBLE OCCUPANCY 2022

Valid for minimum 2 passengers for 6 days / 5 nights

PRICES PER PERSON, in \$CAD	03Jan-09Feb22 23Feb-31Mar22	10-22Feb22 01-30April 17May-30June 01-30 October 22	01-16May22	01July-30 01-30Sep22
Sharing Twin Standard Interior BB	\$929	\$999	\$1259	\$1079
Sharing Twin Deluxe City View BB	\$1079	\$1129	\$1499	\$1199
Dinner Supplement per person per stay (no beverages) \$ 245				

**Prices advertised on our site are valid if you purchase services in one single session. If you disconnect from our site, prices could be different in your next session. The prices indicated exclude the contribution to the Customer Compensation Fund of \$3.50 per \$1,000 of tourism product or service purchased from a travel agent in Quebec.*

OPTION 1

A) FULL DAY WEST ISLAND TOUR

Departure: Monday + Wednesday + Saturday

Departure to **Câmara de Lobos**, the fishing village where the famous "espada" or black scabbard is fished. Next, we pass by **Cabo Girão** (Europe's highest sea cliff, at 580m) and continue our trip along the coast to **Ribeira Brava**. From Ponta de Sol we begin our ascent to the plateau of **Paul da Serra** (at 1400m). Descent to **Porto Moniz**, where you may admire the natural pools. Stop for lunch (not included). Return trip along the northern coast, passing by Seixal and São Vicente. Climb to **Encumeada** (1700m) where you have a view of the sea on both coasts. Return to Funchal.



OR

A) FULL DAY EAST ISLAND TOUR

Departure: Sunday + Tuesday + Friday

Departure to the village of Camacha for a visit to the wickerwork factory. Next, ascent to Poiso on the way to Pico do Arieiro (1818 m). Descent to Ribeiro Frio where you may visit a trout farm as well as admire an important part of the Laurissilva forest of Madeira, which was recently awarded World Heritage status. We continue our trip to Santana, known for its thatched roof houses. Stop for lunch (not included). Next, we go on to Ponta de São Lourenço. Return to Funchal with a last stop at town of Machico, the original capital of the island, hidden in the bay and stretching out over the hillsides, before your return to Funchal.



OPTION 2

A) HALF DAY TOUR - THE CAVES OF SÃO VICENTE

Departure: Monday + Thursday (morning)

Drive along the south-western coast of Madeira until the village of São Vicente where you will be taken to visit the Caves at São Vicente. Enjoy a visit (wear comfortable walking shoes) to the Natural Caves and the Volcanism Centre explaining the formation of Madeira Island. Before returning to Funchal, visit the picturesque village of São Vicente with its breaking scenery the recently restored village center, is one of the most picturesque spots in Madeira.

Included: entrance and guided tour to the Caves of São Vicente (guided tour in English)

Not included: entrance fees not mentioned under included and meals



OR

B) HALF DAY TOUR – EIRA DO SERRADO & MONTE

Departure: Monday + Thursday (afternoon)

We begin our excursion with a visit to Pico dos Barcelos (panoramic view over the city of Funchal). Next, on to Eira do Serrado, a view site situated at 1094m altitude, overlooking the village of Curral das Freiras (Nuns Valley). Our trip continues to the village of Monte where you may visit its gardens and the church of Our Lady of Monte, patron saint of the island. For those who would like to experience one of the ancient means of transport in Madeira, you can try the famous ride in baskets toboggans (not included).
Not included: entrance fees and meals



OR

C) MADEIRA TYPICAL EVENING

Departure: Tuesday + Thursday + Saturday (evening)

We are delighted to invite you to a typical dinner in a Madeira restaurant, to experience the culinary delights of Espetada, marinated beef cooked over the open fire on a Laurel skewer. Milho Frito delicious golden fried maize or even the mouth-watering homemade garlig bread. Put these together with wine and energetic entertainment by a local folklore group and you can be assured of a very enjoyable evening out.

Included: dinner with beverage



OPTION 3

A) HALF DAY – LEVADA DOS MAROÇOS (WALK)

Departure: Wednesday (morning)

Duration: 2, 5 hours

Distance: 6, 5 Km

Difficulty level: Easy

This trail starts in the valley of Machico, in the southeast part of the island, and follows a flat course for about 6, 5 km, giving it a rating of easy on the scale of difficulty. On this walk you get magnificent views over the Valley of Machico (where the Portuguese sailors landed on the island for the first time) and the Deserted Islands. Along this trail, you pass by farmlands of vegetable gardens and fruit trees, mixed with exotic flowers that grow along the way.



OR

B) HALF DAY – LEVADA DO NORTE (WALK)

Departure: Sunday (morning)

Duration: 2, 5 hours

Distance: 7 Km

Difficulty level: easy

The North *Levada*, as the name implies, arises on the north side of the island and extends for about 60 km, crossing a large part of the south coast of the island between Ribeira Brava and Estreito de Câmara de Lobos. The stretch chosen for this walk is about 7 km in length, with a difficulty rating of easy. Along this trail we see some of the exotic flora of the island: eucalyptus, acacia, pines and many wildflowers. The views of the landscape are dominated by farmlands, the fields consisting of terraces, called *poios* by the locals, and intermingle with panoramic views over the sea and the parish of Campanário



OR

C) FULL DAY – LEVADA RABAÇAL / 25 PONTES (WALK)

Departure: Thursday + Saturday

Duration: 4 hours

Distance: 11 Km

Difficulty level: Moderate

The Forestry Station of Rabaçal, in the area of Paúl da Serra, is the starting point for the trail that gives access to the Risco *Levada* and the New Rabaçal *Levada*. The walk along these two *levadas* is rated as moderate in difficulty and is about 11 km in length. First, we follow the Risco *Levada* to the waterfall of the same name, and then we drop down to the 900m elevation to follow the New Rabaçal *Levada*, which takes us to the pool at 25 Fontes, which gets its name from the many waterfalls there. The path is lined with the indigenous and endemic flora of the island, especially the high-altitude vegetation, and there are indescribable views over this protected area. The return to the south coast of the island is through the Cavaleiro Tunnel (about 800m long).



MADEIRA
8 DAYS / 7 NIGHTS
A VACATION WITH UNLIMITED GOLF



Like an eternal spring, Madeira is a golf destination par excellence all year round. Two different islands boast three magnificent golf courses and accommodation, leisure and well-being offerings which delight any golfer.

The climate is mild throughout the year, the untouched nature offers clean air and unforgettable walks, the cuisine is rich in tradition-steeped flavours. Here, you will not be short of choices for a memorable holiday.

The tradition of golf on this Island dates back to 1937, when the Englishmen Miles, Leacock and Blandy built the first nine-hole golf course. You can practise on one of two courses, Palheiro Golf and Santo da Serra Golf Club, with 18 and 27 holes respectively, both notable for the beauty of their surrounding landscape.



One-week stay at Relais & Châteaux Casa Velha Do Palheiro
Including: a one-week car rental, accommodation and unlimited
Golf at Palheiro Golf Course.



ITINERARY

DAY 1 FUNCHAL PALHEIRO (18 KM)

Arrival and pick up your car rental at the airport. Drive (approx. 20 minutes) to your hotel

Accommodation: Relais & Chateau Casa Velha Do Palheiro for 7 nights with daily breakfast

DAY 2 to DAY 7 PALHEIRO

Week at leisure in Palheiro. Unlimited golf included. (B)

DAY 8 PALHEIRO – FUNCHAL

Return the car to the Funchal Airport. End of services. (B)



More info on the accommodation – click [here](#)

INCLUSIONS

- Car rental for 7 days category N - Fiat 500 open roof, manual transmission, A/C or similar code NTMM with pick up charges included and insurances PLUS with unlimited mileage, LDW (CDW+THW), TAX, LAF, 0€ EXCESS (SPCDW, SPTHW)
- 7 nights with daily breakfast in a twin standard room at Casa Velha Do Palheiro
- Unlimited golf at Palheiro Golf Course with guaranteed starting Tee times, 50 % off on Golf Club rental if required, free use of trolley for tee off from the hotel, bag storage and club cleaning at Palheiro Golf club.
- Spa, indoor pool, outdoor pool, sauna, steam room on site
- Wi-Fi included in public areas and rooms

Not Included: International flights, lunches, dinners, beverages, travel insurance, optional tours or all other item not mentioned under inclusions.

Car rental conditions – [click here](#) for all details or ask your agent

PRICE PER PERSON IN DOUBLE OCC. IN \$ CAD * - VALID FOR MINIMUM 7 NIGHTS

Daily arrival in Funchal

7 nights with manual transmission Fiat 500 Car rental and unlimited golf at Palheiro Golf course from:

\$1999**

** Accommodation in a double / twin standard room with breakfast for arrivals between June 16th and September 7th, 2022

Other dates available with supplement (\$).

Also available: Deluxe room, or superior room, double or single occupancy – price on request (\$)

Add the flights from Portugal or from Canada: **available on request.**

**Prices advertised on our site are valid if you purchase services in one single session. If you disconnect from our site, prices could be different in your next session. The prices indicated exclude the contribution to the Customer Compensation Fund of \$3.50 per \$1,000 of tourism product or service purchased from a travel agent in Quebec.*

Palheiro Golf

One of Europe's most beautiful golf courses. Set within the magnificent Palheiro Estate and lying adjacent to the five-star Madeira Island Hotel Casa Velha do Palheiro - a Relais & Châteaux property - the 18-hole, par 72 championship golf course meanders through a pristine environment of maritime pine and botanical woodland embroidered with lush, sub-tropical vegetation.

At nearly 500 m (1640 ft) above sea level, the location is blessed with dramatic views of Madeira's mountainous skyline and the vast Atlantic Ocean. Nestling below just 10 minutes away is Funchal, the island's capital.



Designed by renowned golf architect Cabell B. Robinson, this picturesque layout with year-round appeal takes full advantage of Madeira's hilly terrain, with abrupt ridges and deep valleys providing a compelling challenge for even the most seasoned golfer.

Dining at the Clubhouse Restaurant

Gastronomy at Palheiro Golf Clubhouse Restaurant combines local culinary tastes with a southern European flavour. Influenced by the Atlantic and inspired by the Mediterranean, with a dash of the oriental adding a little spice.

Set under the 18th green at Madeira Island Palheiro Golf, the Clubhouse Restaurant sits high above Funchal and affords a glorious panorama of the bay, the mountains and the Atlantic Ocean.



More info on the golf club – click [here](#)

PRIVATE JEEP TOURS FROM FUNCHAL

HALF DAY JEEP TOUR (EAST OR WEST)

"Enjoy a private half day jeep tour to West or East side, exploring the charming of Madeira in an open roof 4x4, learning all about Madeira's traditions, history, fauna and flora."

If you choose the East side tour, you will visit the majestic Pico do Arieiro at 1.818 mts of altitude, enjoying magnificent landscapes and great views over the island, the famous Nun's Valley, the Ribeira Primeira Park, a sustainable project in the heart of the forest (trout farm) and the peaceful Santo da Serra with its exotic forest among others.

If your choice is the West side of the Island, you will visit Cabo Girão, the highest sea cliff in Europe (580 mts.) with its stunning glass floor balcony, the fantastic Boca dos Namorados viewpoint to Nun's Valley and Câmara de Lobos, a fishing and traditional village, where you will visit a Madeira Wine Lodge to taste the famous Madeira wine (Sweet / Medium Sweet / Dry / Medium Dry).

FULL DAY JEEP TOUR (EAST OR WEST)

"The West or East private full-day tour is the best way to explore the heart of Madeira in an open roof 4x4, learning all about Madeira's traditions, history, fauna and flora."

If you choose to explore the East side of the island, you will visit the majestic Pico do Arieiro at 1.818 mts of altitude enjoying amazing landscapes and great views, Santana the "Biosphere Reserve", famous for its triangular houses, Porto da Cruz, visiting a very traditional Rum Distillery, Pico do Facho with its amazing views over Machico's Valley (the first Capital of Madeira) and the astonishing Ponta de São Lourenço.

If your choice is the West side of the Island, you will enjoy Ribeira Brava village, São Vicente, well known for its vineyards, Porto Moniz and its natural volcanic pools, Fanal, a place of rare beauty with centenary trees in the middle of the Laurissilva Forest (the largest in the world) which is one of the 7th Natural Wonders of Portugal, Paul da Serra, the island's biggest plateau with 1.500 mts of altitude, Cabo Girão, the highest sea cliff in Europe (580 mts.) with its stunning glass floor balcony and Câmara de Lobos, a fishing and traditional village.



HALF DAY JEEP TOUR: SKYWALK AND WINE EXPERIENCE

The relaxing nature combined with the flavour and traditions of Madeira will make this tour memorable. From Funchal we drive to Serra d'Água, a valley at the centre of the island. After passing this area, we go off-road meeting fantastic views over the north of the island (Porto Moniz, Ribeira da Janela, Paúl da Serra and São Vicente). Then, you will have an unforgettable experience with the main wine producers in Madeira, followed by a guided tour through the largest vineyards along with a wine tasting (1 rose, 2 white, 2 red-included) and a professional explanation about traditions, wine culture and wine production. From this fabulous experience, we will continue our tour to one of the most visited places on the island, Cabo Girão, the highest cliff in Europe and second in the World (580 meters), known by its suspended glass floor viewpoint, which offers a spectacular panoramic view over the Atlantic, Câmara de Lobos and Funchal. A perfect tour for nature and wine lovers.

INCLUSIONS

- Private Jeep tours with English speaking guide driver, other languages under consultation
- Private Jeep tours subject to availability and confirmation
- Included: Pick up/drop off in the Hotel in Funchal central area, pick up time to be informed in time of booking
- Only children above 3 years old are allowed to participate in the Jeep tours.
- Tours not available on 24,25,31Dec20 + 01Jan22

Not included: Entrance fees to visit except if mentioned in the description

PRICE PER JEEP EXCURSION

JAN 3 – OCTOBER 31, 2022 PRICES IN \$ CAD:	DAYS / DURATION	PRIVATE JEEP TOURS
		Price per Jeep in \$ CAD
Half day Jeep tour (East OR West)	Every day Duration - Approximate 5 hours	Max 6 persons: \$400
Full day Jeep tour (East OR West)	Every day Duration - Approximate 8 hours	Max 6 persons: \$ 580
Half day Jeep tour: Skywalk & wine experience	Tuesday + Wednesday + Thursday+ Friday + Saturday Duration - Approximate 5 hours	2 persons: \$400 3 persons: \$450 4 persons: \$500

REGULAR WALKS (LEVADAS) - MADEIRA ISLAND

(Prices are per person in \$ CAD valid from Jan 3 to October 31, 2022)

FULL DAY: LEVADA RIBEIRO FRIO / PORTELA – \$55

Departure: Monday
Duration: 4 hours
Distance: 11 Km
Difficulty level: Moderate

The Furado *Levada*, which begins in the Forestry Park of Ribeiro Frio, (870 m) is one of the oldest on Madeira Island and is rated moderate on the scale of difficulty. The 11-km walk takes us to the lookout point at Portela (600m), passing through tunnels dug in the rock, waterfalls and valleys, with some indigenous species of vegetation and birds that are characteristic of the Laurisilva forest. Along the way, the landscape views alternate between the Ribeiro Frio Valley and the settlements of Porto da Cruz and Faial on the north side of the island. At the end of the *levada*, there is still time to enjoy the view over the Penha d'Águia rock formation.

FULL DAY: LEVADA QUEIMADAS / CALDEIRÃO VERDE – \$55

Departure: Tuesday
Duration: 4 hours
Distance: 13 Km
Difficulty level: Moderate

The *levada* of Caldeirão Verde covers a distance of 13 km and is of moderate difficulty. Beginning and ending in the Queimadas Forestry Park, which is in the municipality of Santana, this *levada* leads us through an enchanted forest, where at every moment we discover the abundant biodiversity of the flora and fauna of the Laurisilva Forest, a UNESCO Natural World Heritage Site. This is one of the paths where water, the source of life, is found everywhere, in the tunnels, rocks and streams, taking us to Caldeirão Verde, famous for its pool and waterfall. Along the way, the small settlements of Santana, Ilha and São Jorge can be seen.

HALF DAY: LEVADA MAROÇOS "MIMOSA VALLEY" – \$42

Departure: Wednesday (morning)
Duration: 2,5 hours
Distance: 6,5 Km
Difficulty level: Easy

This trail starts in the valley of Machico, in the southeast part of the island, and follows a flat course for about 6, 5 km, giving it a rating of easy on the scale of difficulty. On this walk through what is also known as "Mimosa Valley", you get magnificent views over the Valley of Machico (where the Portuguese sailors landed on the island for the first time) and the Deserted Islands. Along this trail, you pass by farmlands of vegetable gardens and fruit trees, mixed with exotic flowers that grow along the way.

FULL DAY: LEVADA RABAÇAL / 25 FONTES – \$55

Departure: Thursday + Saturday

Duration: 4 hours

Distance: 11 Km

Difficulty level: Moderate

The Forestry Station of Rabaçal, in the area of Paúl da Serra, is the starting point for the trail that gives access to the Risco *Levada* and the New Rabaçal *Levada*. The walk along these two *levadas* is rated as moderate in difficulty and is about 11 km in length. First, we follow the Risco *Levada* to the waterfall of the same name, and then we drop down to the 900m elevation to follow the New Rabaçal *Levada*, which takes us to the pool at 25 Fontes, which gets its name from the many waterfalls there. The path is lined with the indigenous and endemic flora of the island, especially the high-altitude vegetation, and there are indescribable views over this protected area. The return to the south coast of the island is through the Cavaleiro Tunnel (about 800m long).

FULL DAY: LEVADA PICO DO ARIEIRO / PICO RUIVO – \$55

Departure: Friday

Duration: 4 hours

Distance: 9 Km

Difficulty level: hard (mountain walk)

This trail is located in the central Mountain Massif and connects the three highest peaks of the island. Beginning at Pico Arieiro (1810 m), it passes by Pico das Torres (1851 m) and ends at Pico Ruivo (1862 m). Walking over its many ups and downs using steps carved in the rocks, you will marvel at the rock formations of the central mountain range, the high-altitude endemic vegetation and the birds that are part of this ecosystem. When you arrive at the top of Pico Ruivo, there are three lookout points from which you have panoramic views of the island in every direction. We go down to Achada do Teixeira for the return.

HALF DAY: LEVADA DO NORTE (BOA MORTE/QUINTA GRANDE) – \$42

Departure: Sunday (morning)

Duration: 2,5 hours

Distance: 7 Km

Difficulty level: easy

The North *Levada*, as the name implies, arises on the north side of the island and extends for about 60 km, crossing a large part of the south coast of the island between Ribeira Brava and Estreito de Câmara de Lobos. The stretch chosen for this walk is about 7 km in length, with a difficulty rating of easy. Along this trail we see some of the exotic flora of the island: eucalyptus, acacia, pines and many wildflowers. The views of the landscape are dominated by farmlands, the fields consisting of terraces, called *poios* by the locals, and intermingle with panoramic views over the sea and the parish of Campanário.

PROMO

COMBINED PACKS (SUPER SAVER):

2 Full days + 1 Half Day for: \$130 per person

3 Full days for: \$140 per person

INCLUSIONS

- Official mountain guide (English speaking, other languages under confirmation).
- Pick up and return at Hotels in Funchal.

Does not include: meals

NOTE: A minimum of 2 persons is required for its operation.

Notes

**Prices advertised on our site are valid if you purchase services in one single session. If you disconnect from our site, prices could be different in your next session. The prices indicated exclude the contribution to the Customer Compensation Fund of \$3.50 per \$1,000 of tourism product or service purchased from a travel agent in Quebec.*

Don't forget to book travel insurance for your clients and verify the terms, conditions, limitations, exclusions and requirements of their insurance policy before they leave Canada and please verify travel restrictions, local safety and security conditions, entry and exit requirements, quarantines, curfew etc. Visit <https://travel.gc.ca/travelling/advisories> for further details on the destination you are traveling to.

All Exotik suppliers will fully respect their own country's' Covid-19 safety measures and regulations at time of travel in order for the passengers to stay as safe as possible.

TAKE ADVANTAGE OF THE NEW PORTUGAL INSURANCE AND TRAVEL SAFE

Portugal stepped up with a special travel insurance coverage for people who may be hesitant to book a vacation because of COVID-19.

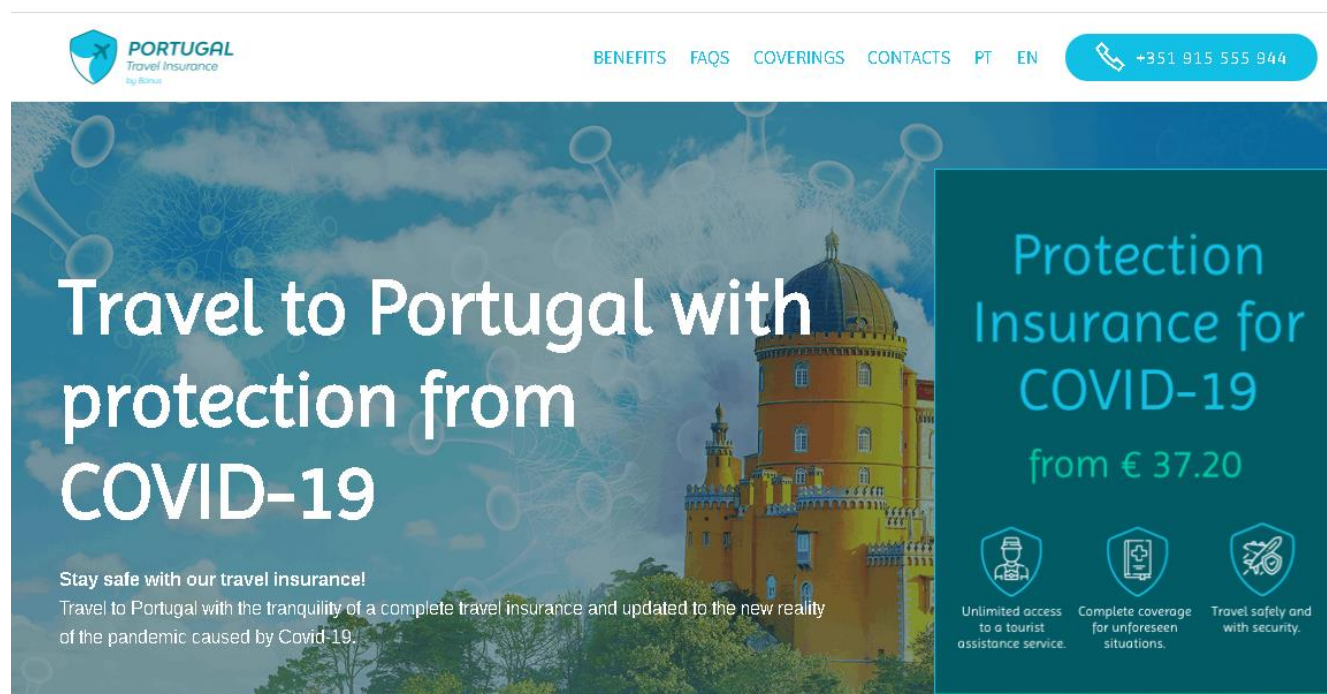
Portugal Travel Insurance is available through RNA Assistance Insurance starting from \$57 per person, at

<https://www.portugaltravelinsurance.com/en>

Coverage extends to the entire country and includes medical, surgical, and pharmaceutical and hospital expenses associated with COVID-19, as well as expenses due to cancellation, interruption, or extension of travel due to the pandemic.

The country's tourism board, Visit Portugal, says it is supporting the insurance initiative for international visitors, adding that it complements other recent programs including the Clean & Safe seal and the renewal of the Portugal Health Passport, which covers COVID-19 tests for visitors.

Canadians can travel to Portugal without restrictions, and only need to show proof of a negative COVID-19 test (taken within 72 hours of arrival) if they're heading to Madeira or the Azores.



The screenshot shows the top of the Portugal Travel Insurance website. At the top left is the Portugal Travel Insurance logo. To its right are navigation links: BENEFITS, FAQs, COVERINGS, CONTACTS, PT, and EN. Further right is a blue button with a phone icon and the number +351 915 555 944. Below this is a large banner with a background image of a castle and virus particles. The banner text reads: "Travel to Portugal with protection from COVID-19". Below this, it says "Stay safe with our travel insurance! Travel to Portugal with the tranquility of a complete travel insurance and updated to the new reality of the pandemic caused by Covid-19." On the right side of the banner, there is a dark teal box with the text "Protection Insurance for COVID-19 from € 37.20". Below this text are three icons: a person with a magnifying glass, a shield with a cross, and a shield with a checkmark. Each icon has a corresponding description: "Unlimited access to a tourist assistance service.", "Complete coverage for unforeseen situations.", and "Travel safely and with security."

PORTUGAL
Travel Insurance
by RNA

BENEFITS | FAQs | COVERINGS | CONTACTS | PT | EN

+351 915 555 944

Travel to Portugal with protection from COVID-19

Stay safe with our travel insurance!
Travel to Portugal with the tranquility of a complete travel insurance and updated to the new reality of the pandemic caused by Covid-19.

Protection Insurance for COVID-19 from € 37.20

- Unlimited access to a tourist assistance service.
- Complete coverage for unforeseen situations.
- Travel safely and with security.